



Identity Stronghold Secure Badgeholder® – Duolite

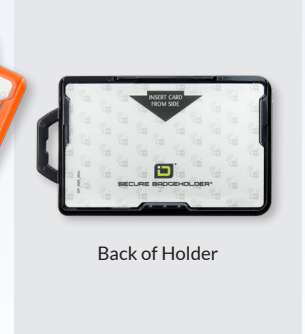
Available in a huge variety of color options, this dual card, open faced badge holder is shielded on both sides.

Manufactured of transparent rigid Polycarbonate, this holder is as tough as nails. The product is designed to allow for your choice of top load or side load and requires your credential to be partially removed to be read in your building access readers. The one piece, top mounted attachment point is incredibly durable and compatible with all standard lanyards, reels and badge clips.

GSA APL #: 1284



Duolite



Back of Holder

Identity Stronghold Secure Badgeholder® – Classic

Sleek and innovative, this single card, open faced design supports the industry's only "squeeze to read" functionality.

Designed to clearly display your federal credential and allow for quick and easy building entry, this holder contains squeeze tabs at the top which allow the ID card to be read in your PACS readers without card removal. Once the tabs are released, the holder returns to a closed position, shielding your identity immediately. Manufactured of rigid Polycarbonate, available in a whole host of transparent color options, and compatible with any standard badge accessory.

GSA APL #: 1283



Classic



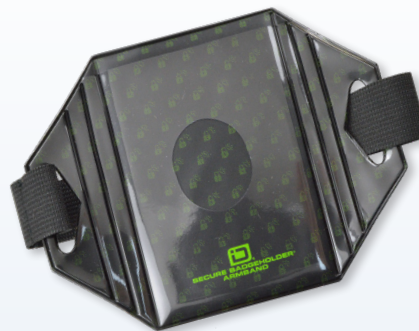
Back of Holder

Identity Stronghold Secure Badgeholder® – Shielded Armband

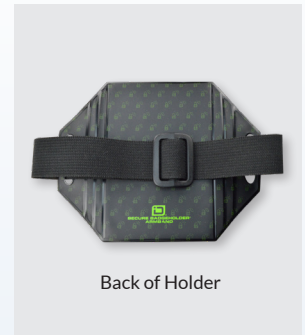
The Secure Badgeholder® Armband was designed for the active wearer of RFID chipped ID and access badges.

Armband ID holder secures the badge in a strong, weather resistant vinyl pocket with thumbhole for easy credentials presentation. Wide elastic band helps secure the armband badge holder while keeping it comfortable to wear.

GSA APL #: 1360



Armband



Back of Holder

1120-604KA